



SaniSpray HP™

High Production Airless Sprayers Designed Specifically to Spray-Apply Chemicals to Sanitise, Disinfect and Deodorise Faster



SPRAY WITH CONFIDENCE

DELIVERS HIGH SPEED & PRODUCTIVITY

Choose the SaniSpray HP model by its flow rate to match job requirements

DELIVERS CONSISTENT ATOMISATION & COVERAGE

Delivers the proper atomisation required to quickly and consistently coat surfaces to disinfect and sanitise efficiently

IS BUILT FOR YOUR APPLICATIONS

Uniquely built with the highest grade materials that are compatible with disinfectants, sanitisers and deodorisers — unlike traditional airless paint equipment

COMES WITH EVERYTHING YOU NEED TO START NOW

Ready to spray out of the box with everything you need — just add disinfectant and get to work

Introducing SaniSpray HP from Graco

The industry's first airless high production equipment built specifically for your sanitising, disinfecting and deodorising jobs.

Graco's SaniSpray HP products have been designed to deliver consistent coverage, without heavy drips and runs, so that you can achieve specified disinfectant dwell times.

Don't leave your success to chance.

Graco SaniSpray solutions include innovative, patented technologies to deliver highest productivity on all your cleaning jobs small or large.

TRUST YOUR DISINFECTION AND SANITATION PROCESS TO GRACO

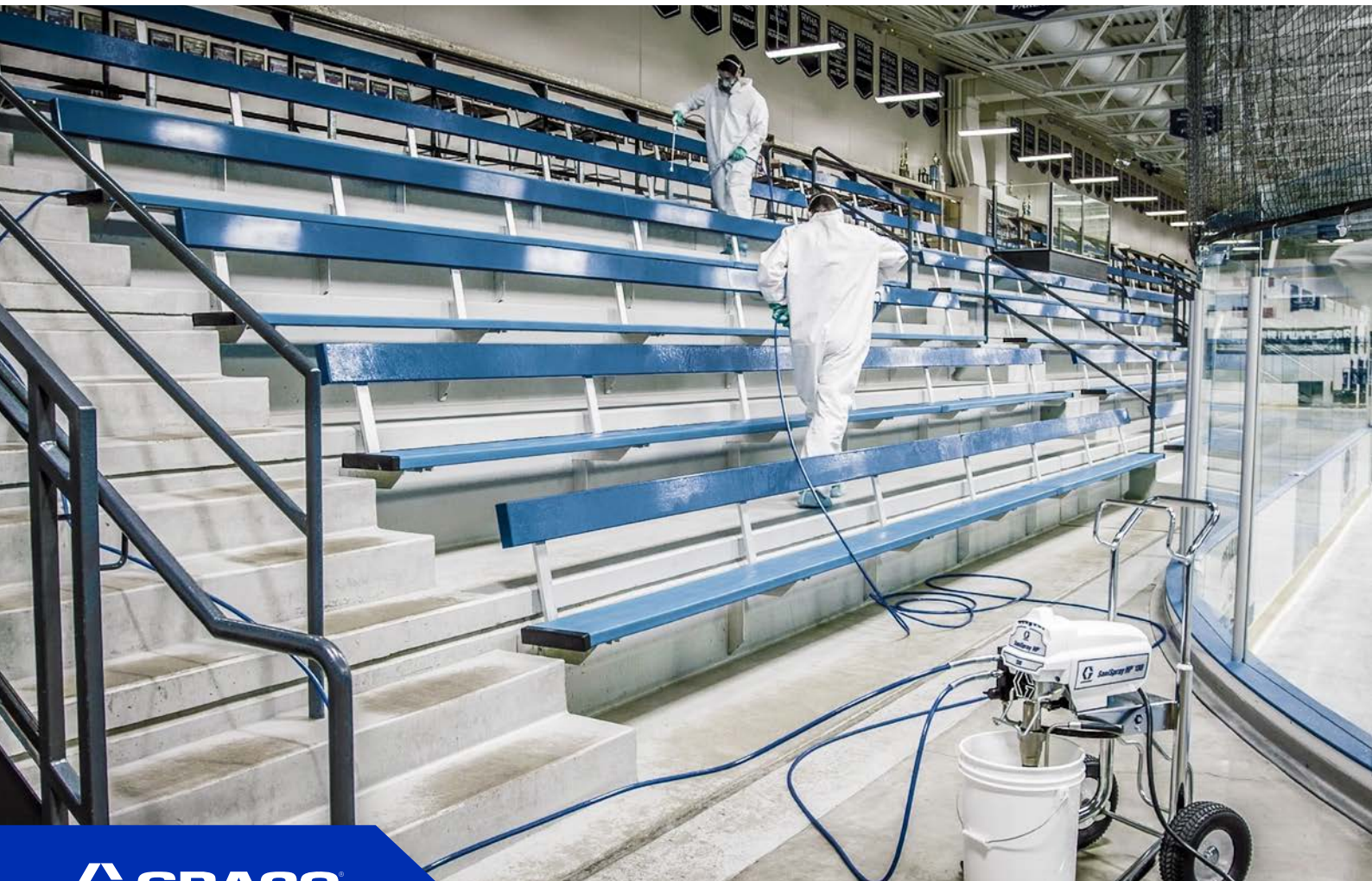
Graco is committed to providing the highest quality products available.

AMERICAN BUILT QUALITY SINCE 1926

100% factory-tested and field-proven Graco's professional spray equipment is designed, manufactured, and assembled in the USA with global components.

INDUSTRY-LEADING SERVICE AND SUPPORT

We have you 100% covered with full product support.



Use SaniSpray HP for high production sanitising, disinfecting and deodorising jobs... EVERYWHERE



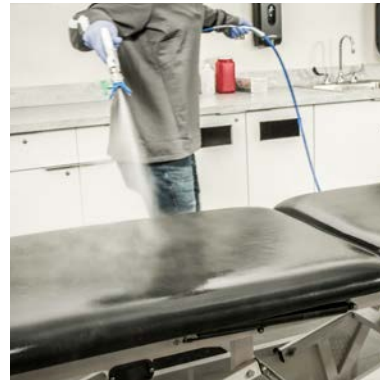
FOOD SERVICES



TRANSPORTATION



ARENAS & ATHLETIC FACILITIES



HEALTH CARE



HOUSING & EDUCATION



HOSPITALITY

Not all airless sprayers are created equal. Only Graco's SaniSpray HP sprayers are designed and built specifically to be compatible with sanitising and disinfecting chemicals while applying them with maximum efficiency.

SANISPRAY HP :



DELIVERS HIGH SPEED & PRODUCTIVITY

Choose the SaniSpray HP model by its flow rate to match job requirements



DELIVERS CONSISTENT ATOMISATION & COVERAGE

Delivers the proper atomisation required to quickly and consistently coat surfaces to disinfect and sanitise efficiently



IS BUILT FOR YOUR APPLICATIONS

Uniquely built with the highest grade materials that are compatible with disinfectants, sanitisers and deodorisers — unlike traditional airless paint equipment

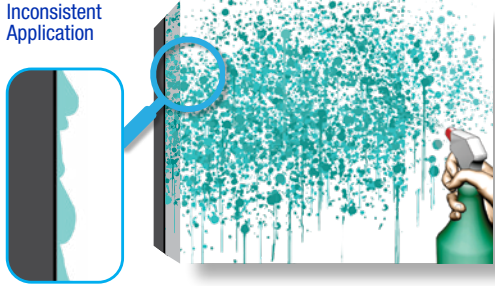


COMES WITH EVERYTHING YOU NEED TO START NOW

Ready to spray out of the box with everything you need—just add disinfectant and get to work

THE OLD WAY

Inconsistent Application



- Inconsistent coverage with drips and runs
- Additional step required to wipe area down
- Small reservoirs require frequent filling



THE SANISPRAY HP WAY

Consistent Thickness



CONSISTENT COVERAGE FROM EDGE TO EDGE

- Consistent application coverage delivered in high production or fine spray methods
- Complete surface coverage to meet chemical dwell time requirements
- Fastest application method—period
- Choose from a variety of RAC X™ LP QuickChange™ tip sizes to meet spray width and speed needs



A Sprayer for Every Job

The complete line of SaniSpray HP sprayers are built to deliver the highest level of productivity on every job—whether you need to treat a small room or an entire complex, there is a SaniSpray HP model with the performance to take on the task.





60
Litres or Less
Every Week

PATENTED TECHNOLOGY

60
Litres or Less
Every Week

PATENTED TECHNOLOGY



200
Litres or Less
Every Week

PATENTED TECHNOLOGY

SaniSpray HP20

CORDLESS HANDHELD SPRAYER | PART # 25R945 (230V CEE)
PART # 25R950 (230V UK)

SaniSpray HP20*

CORDED HANDHELD SPRAYER | PART # 25R943 (230V CEE)
PART # 25R949 (230V UK)

SPRAY UP TO 0.6L PER MINUTE

FILL & SPRAY 1.25 L FLEXLINER BAG SYSTEM

- Extended spraying between refills
- Spray in any direction—even upside down

TRIAx™ AIRLESS PISTON PUMP WITH PROCONNECT™

REVERSE-A-CLEAN (RAC) X LP TIPS

- Choose from 9 RAC X LP tips to meet your disinfectant's dwell time and requirements

40 CM SPRAY EXTENSION

- Provides additional reach
- Reduces operator chemical exposure

SaniSpray HP20 Cordless Includes:

BRUSHLESS DC MOTOR

- Dependable motor with spark-free operation provides ability to spray alcohol-based (flammable) chemicals

(2) DEWALT® 18V LITHIUM-ION BATTERIES & CHARGER**

- Sprays up to 9.5 litres on each charge

SaniSpray HP65

PORTABLE HOPPER SPRAYER | PART # 25R946 (230V CEE)
PART # 25R948 (230V IT/DK/CH/UK)

3X FASTER THAN SANISPRAY HP20

POUR & GO 5.7 L LITRES HOPPER

- Hopper delivers extended spray time along with self contained portability

GRAB & GO SELF-CONTAINED SYSTEM

- Carry sprayer and material together—lid prevents splashes and spills while carrying

EXTENDED REACH TO SPRAY ANYWHERE

- Add up to 90 m of hose to spray anywhere

POWERFUL DC MOTOR

- DC motor with spark arrestor provides ability to spray alcohol-based (flammable) chemicals

ADJUSTABLE PRESSURE CONTROL

PROX™ AIRLESS PISTON PUMP WITH PROXCHANGE™

LIGHTWEIGHT SANISPRAY HP GUN

- Allows products to be applied faster to speed up disinfection process

REVERSE-A-CLEAN (RAC) X LP TIPS

- Choose from 12 RAC X spray tips to meet your coating's dwell time and atomisation requirements

40 CM SPRAY EXTENSION

- Provides additional reach
- Reduces operator chemical exposure

* Not for use with alcohol-based (flammable) materials.

** DEWALT® and the DEWALT Logo are trademarks of DEWALT Industrial Tool Co. and are used under licence.





Litres or Less
Every Week

PATENTED TECHNOLOGY



Litres or More
Every Week

PATENTED TECHNOLOGY

SaniSpray HP 130

2-GUN CART SPRAYER | PART # 25R947 (230V CEE)
PART # 25R951 (110V UK)

2X FASTER THAN SANISPRAY HP 65

2-GUN PRODUCTIVITY DELIVERED

- Simultaneous dual gun performance for maximum disinfection rates

SPRAY FROM ANY CONTAINER

- Extended spraying without refills

EXTENDED REACH TO SPRAY ANYWHERE

- Add up to 90 m of hose to spray anywhere

SMARTCONTROL™ ADJUSTABLE PRESSURE CONTROL

- Full range control delivers even coverage on specific objects or area fine misting

ROLL & GO CART DESIGN

- Easily move sprayer and chemical bucket together

ENDURANCE™ PISTON PUMP WITH PROCONNECT

LIGHTWEIGHT SANISPRAY HP GUN

- Allows faster application to speed up disinfection process

REVERSE-A-CLEAN (RAC) X LP TIPS

- Choose from 17 RAC X spray tips to meet your coating's dwell time and atomisation requirements

40 CM SPRAY EXTENSION

- Provides additional reach
- Reduces operator chemical exposure

MAXPOWER™ MOTOR & ADVANTAGE DRIVE™

- Dependable motor with spark-free operation provides ability to spray alcohol-based (flammable) chemicals

SaniSpray HP 750

CART AIRLESS SPRAYER | PART # 273216 - 4 GUN PACKAGE
PART # 273217 - 8 GUN PACKAGE

SPRAYS UP TO 22 LITERS PER MINUTE

UP TO 8-GUN PRODUCTIVITY DELIVERED

- Highest production airless disinfectant sprayer available on market
- Sanitise and disinfect up to 37160 m² (400,000 sq ft) from one central location for maximum production

MATERIAL FEED OPTIONS

- Siphon from a 20 - 200 L (5- to 55 Gal) container or easily fill the 38 L (10 Gal) stainless steel hopper

MAXIMUM REACH

- Up to 150 meters (500 ft) of hose per gun to spray anywhere for high production applications

ADJUSTABLE PRESSURE CONTROL

- Multiple tips provided to meet your disinfectant's dwell time and atomisation requirements

HEAVY DUTY CART WITH WHEELS

- For portability and maneuverability
- Flat-free tires

LIGHTWEIGHT SANISPRAY HP GUNS

- Allows disinfectants to be applied faster

RAC X® LP SPRAY TIPS

- Choose from a wide variety of RAC X LP tips to meet your disinfectant's dwell time and atomisation requirements

QUIET ELECTRIC MOTOR

Technical Specifications



Model Name:	SaniSpray HP 20* Corded Handheld Sprayer	SaniSpray HP 20 Cordless Handheld Sprayer
Part Numbers:	25R943 (230V CEE) 25R949 (230V UK)	25R945 (230V CEE) 25R950 (230V UK)
Max. Flow (L/Min)	0.6	0.6
Max. Tip Size	.019"	.019"
Pressure bar (PSI)	Adjustable 69 Bar (0-1.000 psi)	Adjustable 69 Bar (0-1.000 psi)
Particle ** Micron Size	Adjustable Particle Size Fine Mist to Coarse Spray	Adjustable Particle Size Fine Mist to Coarse Spray
Capacity	Fill and Spray 1.25 L Reservoir	Fill and Spray 1.25 L Reservoir
Power Sources	230V CEE Corded 230V UK Corded	DEWALT 18V Cordless lithium Ion Batteries
Includes	<ul style="list-style-type: none"> • 313 Fine Spray Tip • 515 & 619 Coarse Spray Tips • 40 cm Spray Extension (25T282) • 5 FlexLiner Bags • Storage Plug & Storage Bag 	<ul style="list-style-type: none"> • 313 Fine Spray Tip • 515 & 619 Coarse Spray Tip • 40 cm Spray Extension (25T282) • (2) DEWALT 18V Max 2.0 ah Lithium-Ion Batteries • Charger • 5 FlexLiner Bags • Storage Plug & Storage Bag
Modular Repair	✓	✓

* SaniSpray HP20 Corded Handheld sprayers cannot spray alcohol based (flammable) products.

** Particle size will vary based on tip size, pressure and disinfection product used. Average particle size measured when spraying water ranges from 30-110 microns.

Compatible Disinfectants

Approved Alcohol-based (Flammable) Active Ingredients
Ethanol, Isopropanol (except for SaniSpray HP20 Corded models)

Approved Non-Alcohol Based Active Ingredients—
Aldehydes, Phenols, Quaternary Ammonium Compounds,
Sodium Hypochlorite (Bleach), Peroxyacetic Acid,
Hydrogen Peroxide, Hypochlorous Acid

Consult with your material manufacturer to confirm spray application and equipment compatibility

		RAC X LP TIPS:							
		LESS MATERIAL FLOW					MORE		
		FINE MIST		ATOMISATION		COARSE SPRAY			
		IN	.013"	.015"	.017"	.019"	.021"	.023"	.025"
Narrow ↑ SPRAY PATTERN WIDTH ↓ Wide	6-8		LP 313	LP 315					
	8-10			LP 415	LP 417	LP 419	LP 421	LP 423	LP 425
	10-12			LP 515	LP 517	LP 519	LP 521	LP 523	LP 525
	12-14			—	LP 617	LP 619	LP 621	LP 623	LP 725
	14-16			—	—	—	—	LP 723	LP 725

SaniSpray 20 Optimal Range
 SaniSpray 65 Optimal Range
 SaniSpray 130 Optimal Range



Model Name:	SaniSpray HP 65 Portable Hopper Sprayer	SaniSpray HP 130 2-Gun Cart Sprayer	SaniSpray HP 750 Cart Airless Sprayer
Part Numbers:	25R946 (230V CEE) 25R948 (230V IT/DK/CH/UK)	25R947 (230V CEE) 25R951 (110V UK)	273216 (4 GUN CART SPRAYER) 273217 (8 GUN CART SPRAYER)
Max. Flow (L/Min)	1.9	3.8 Ability to use 2 guns simultaneously	22 Ability to use 4 - 8 guns simultaneously
Max. Tip Size	.023"	.031"	.031"
Pressure bar (PSI)	Adjustable 69 Bar (0-1.000 psi)	Adjustable 69 Bar (0-1.000 psi)	Adjustable 83 Bar (0-1.200 psi)
Particle ** Micron Size	Adjustable Particle Size Fine Mist to Coarse Spray	Adjustable Particle Size Fine Mist to Coarse Spray	Adjustable Particle Size Fine Mist to Coarse Spray
Capacity	Pour & Go 5.7 L Reservoir	High Production Use ANY Container	38 L (10 Gal) Hopper or Siphon Feed
Power Sources	230V CEE Corded 230V IT,DK,CH,UK Corded	230V CEE Corded 110V UK Corded	240V CEE Corded
Includes	<ul style="list-style-type: none"> • SaniSpray HP Gun (25T289) • 1/4" x 15 m BlueMax II Hose • 1/8" x 1.4 m BlueMax II Whip Hose • Fine Spray Tip (515) • Medium & Coarse High Production Spray Tips (617 & 619) • 40 cm Spray Extension (25T282) 	<ul style="list-style-type: none"> • (2) SaniSpray HP Guns (25T289) • (2) 1/4" x 15 m BlueMax II Hose • (2) 1/8" x 1.4 m BlueMax II Whip Hose • (2) 40 cm Spray Extensions (25T282) • Fine Spray Tips (2-617) • Medium & Coarse High Production Spray Tips (2-619 & 2-621) 	<ul style="list-style-type: none"> • 4 or 8 - SaniSpray HP Guns (273226) <p>PARTS SUPPLIED PER GUN:</p> <ul style="list-style-type: none"> • (3) 1/4" x 30m (100 ft) BlueMax II Hoses • (1) 1/8" x 1.4m (4.5 ft) BlueMax II Whip Hose • (1) RAC X LP 617 Spray tips • (1) RAC X LP 619 Spray tips • (1) RAC X LP 723 Spray tips • (1) 40 cm Spray Extension (25T282)
Modular Repair	✓	✓	-



ABOUT GRACO

Founded in 1926, Graco is a world leader in fluid handling systems and components. Graco products move, measure, control, dispense and apply a wide range of fluids and viscous materials used in vehicle lubrication, commercial and industrial settings.

The company's success is based on its unwavering commitment to technical excellence, world-class manufacturing and unparalleled customer service. Working closely with qualified distributors, Graco offers systems, products and technology that set the quality standard in a wide range of fluid handling solutions. Graco provides equipment for spray finishing, protective coating, paint circulation, lubrication, and dispensing sealants and adhesives, along with power application equipment for the contractor industry. Graco's ongoing investment in fluid management and control will continue to provide innovative solutions to a diverse global market.

GRACO LOCATIONS

MAILING ADDRESS

P.O. Box 1441
Minneapolis, MN 55440-1441
Tel: 612-623-6000
Fax: 612-623-6777

AMERICAS

MINNESOTA

Worldwide Headquarters
Graco Inc.
88-11th Avenue N.E.
Minneapolis, MN 55413

EUROPE

BELGIUM

European Distribution Center
Graco Distribution BV
Industrieterrein-Oude Bunders
Slakweidestraat 31
3630 Maasmechelen,
Belgium
Tel: 32 89 770 700
Fax: 32 89 770 777

ASIA PACIFIC

AUSTRALIA

Graco Australia Pty Ltd.
Suite 17, 2 Enterprise Drive
Bundoora, Victoria 3083
Australia
Tel: 61 3 9468 8500
Fax: 61 3 9468 8599

CHINA

Graco Hong Kong Ltd.
Shanghai Representative Office
Building 7
1029 Zhongshan Road South
Huangpu District
Shanghai 200011
The People's Republic of China
Tel: 86 21 649 50088
Fax: 86 21 649 50077

INDIA

Graco Hong Kong Ltd.
India Liaison Office
Room 432, Augusta Point
Regus Business Centre 53
Golf Course Road
Gurgaon, Haryana
India 122001
Tel: 91 124 435 4208
Fax: 91 124 435 4001

JAPAN

Graco K.K.
1-27-12 Hayabuchi
Tsuzuki-ku
Yokohama City, Japan 2240025
Tel: 81 45 593 7300
Fax: 81 45 593 7301

KOREA

Graco Korea Inc.
38, Samsung 1-ro 1-gil
Hwaseong-si, Gyeonggi-do, 18449
Republic of Korea
Tel: 82 31 8015 0961
Fax: 82 31 613 9801

All written and visual data contained in this document are based on the latest product information available at the time of publication. Graco reserves the right to make changes at any time without notice.

Graco is certified ISO 9001.



Europe
+32 89 770 700
FAX +32 89 770 777
WWW.GRACO.COM

©2020 Graco Distribution BV 300788ENEU Rev. C 08/20 Electronic Version only.
All other brand names or marks are used for identification purposes and are trademarks of their respective owners.
For more information on Graco's intellectual property, see www.graco.com/patent or www.graco.com/trademarks.